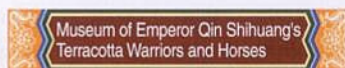


square meters. Over 3,000 exhibits are selected from tens of thousands of cultural relics excavated in Shaanxi Province, and most of them are rare treasures, such as terracotta warriors and horses of Emperor Qin Shihuang, Bronze Chariots and Horses of Han Dynasty, imperial jade seals, an agate cup with an animal head, bronze wares of the Shang and Zhou dynasties, gold and silver wares of the Tang Dynasty, etc. In particular, the beautiful murals from the Tang tombs are rare works of art.

Located in the Central Hall, the two-story Basic Exhibition Hall is composed of seven parts: the

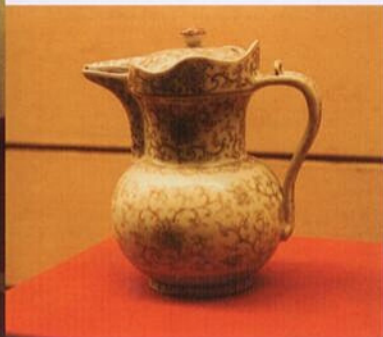
Pre-history times, Zhou Dynasty, Qin Dynasty, Han Dynasty, Wei, Jin and Southern and Northern dynasties, Sui and Tang dynasties, and Song, Yuan, Ming and Qing dynasties, reflecting the long-lasting history and splendid culture of Shaanxi Province from Lantian Man to the Opium War in 1840. On the western side is the Theme Exhibition Hall, which mainly hold various types of theme exhibitions with Shaanxi local cultural characteristics, such as the Silk Road Exhibition and the Exhibition of Yaozhou Porcelain. On the eastern side is the Temporary Exhibition Hall, where Chinese-foreign cultural exchanges are conducted, and temporary exhibitions of cultural relics from all provinces and cities in China are held.

Add: 91 Xiaozhai Donglu
Opening hours: 08:00-18:00
Admission: 35 yuan
Transport: It can be reached by bus Nos. 5, 24, 27, 521, 610 and 701.

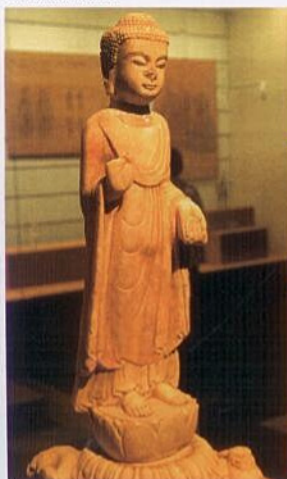


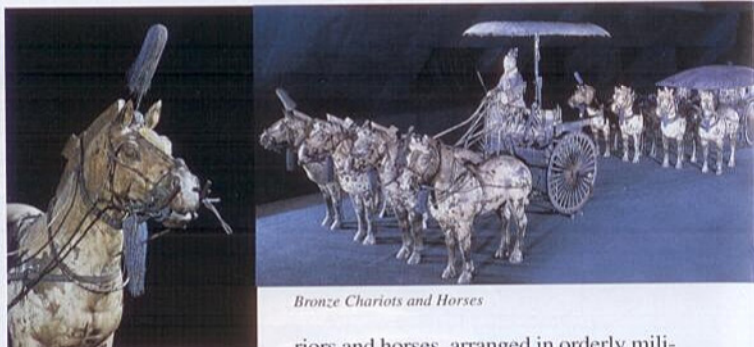
The Museum of Emperor Qin Shihuang's Terracotta Warriors and Horses

An ancient container



A Buddhist statue





A terracotta horse

Bronze Chariots and Horses

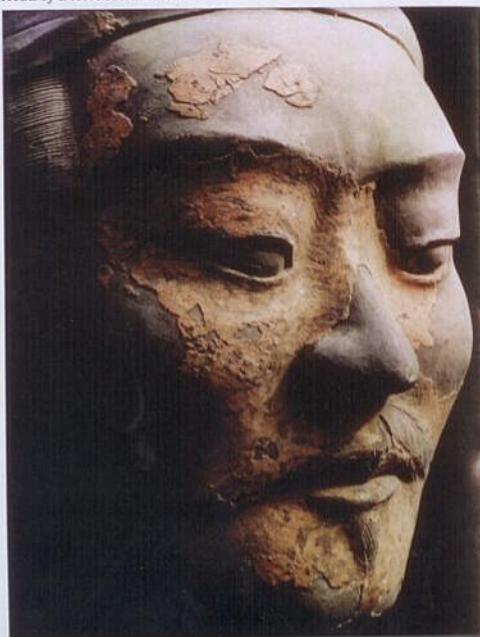
Horses and Mausoleum of Emperor Qin Shihuang are key historical monuments under state protection, and national AAAA scenic areas. They have been included in the list of the world cultural heritages by the UNESCO. The terracotta warriors and horses were excavated in 1974, and the museum was built at the site in 1979.

The museum has three pits of terracotta warriors and horses, forming a huge legion. The three pits are in the form of a Chinese character "品," with a total area of 22,780 square meters. Over 7,400 life-size warriors and horses, and over 130 chariots were excavated.

Pit 1, the largest of three, occupies an area of 14,260 square meters. It contains over 6,000 terracotta war-

riors and horses, arranged in orderly military formations. In front of the army, three rows of 70 warriors each make up the vanguard, which is followed by the main body of the army, 38 rows of troops. There are also flank columns and rearguards. The array breathes the power of Emperor Qin Shihuang's army. In the shape of a zigzag ruler, and with an area of 6,000 square meters, Pit 2 is a large military formation of chariots, cavalymen, archers and foot soldiers and contains four independent units, with over 1,300 terracotta warriors

Head of a terracotta warrior



and horses, over 80 chariots and a large number of metal weapons. Pit 3 is in the shape of "凹," with an area of 520 square meters. It contains 68 pottery warriors, four horses and one chariot. Pit 3 forms an organic whole with the other two pits.

All the terracotta warriors and horses are meticulously made, tall and strong. Legend has it that they were sculptured according to the real imperial troops that protected the imperial palace of the Qin Dynasty. The warriors are well modeled and proportioned, and each has different features and facial expression. Uniformly strong and firm in appearance, they vary in individual aspects according to age, experience and social status. Some are generals, some are officers and the others are soldiers. The shortest is 1.78 meters, and the highest, 1.97 meters; and the lightest is 110 kilograms, and the heaviest, 300 kilograms. The heads and hands were

modeled separately and then attached and painted, showing high workmanship.

The museum is well equipped with perfect tourist facilities, including restaurants, shops, a parking lot, a round-screen cinema, a photo studio, and so on. It takes over 30 minutes from Xi'an to the Museum of Emperor Qin Shihuang's Terracotta Warriors and Horses by bus along the expressway.

Add: Qinling Town, Lintong Dist.
Opening hours: 08:00-18:00
Admission: 65 yuan
Transport: Tourists can get on No. 306 bus at the Xi'an Railway Station to go to the tourist attraction, or take the one-day tourist bus.

Pit 1 of terracotta warriors and horses





A terracotta archer
in kneeling position



Banpo Museum

Constructed on the ruins of Banpo Village in 1957, the Xi'an Banpo Museum is a key historical monument under state protection. With a history of about 6,000 years, Banpo is the ruins of a typical village of a maternal clan community, belonging to Yangshao culture of the New Stone Age. The Banpo Museum covers an area of 75,000 square meters, and its eight exhibition halls have an area of 4,551 square meters, divided into three parts: living area, pottery-making area and grave area. The Banpo Museum mainly displays the excavated remains of 6,000-year-old houses. The archaeological excavations have proved that the ruins of Banpo Village have six oldest pottery kilns in China, and the patterns on the pottery wares are the origin of China's totem. It is the first museum of the human ruins in China.

The present Banpo Village of a maternal clan community was opened to the public in June 1994, with an area of 33,000 square meters, including some imitation thatched houses of ancient dwellings where Banpo ancestors lived, the "Pottery Hill," and a restored primitive village. Dressed up Banpo villagers will demonstrate the life of a primitive village, play *xun* (egg-shaped ancient wind instrument made of clay with one to six holes) and perform primitive dances. Tourists can appreciate and participate in the production, celebrations, sacrificial rites and dances of the

Banpo Museum

